

15K PIPE NIPPLES & STINGERS

15K Flex Lance Stingers/Pipe Nipples Advanced Pressure Systems proudly offers a growing line of quality flex lance stingers for every pressure and application. Stingers and pipe nipples are offered in 304 stainless steel. When ordering, please specify length and thread size. Additional lengths available upon request.



Part #	Stinger Thread	Length, In.	PSI/Bar
20-006-012	1/16" NPT	12"	15K/1034
20-006-018	1/16" NPT	18"	15K/1034
20-006-024	1/16" NPT	24"	15K/1034
20-006-036	1/16" NPT	36" (3 Ft.)	15K/1034
20-006-048	1/16" NPT	48" (4 Ft.)	15K/1034
20-007-012	1/8" NPT	12"	15K/1034
20-007-018	1/8" NPT	18"	15K/1034
20-007-024	1/8" NPT	24"	15K/1034
20-007-036	1/8" NPT	36" (3 Ft.)	15K/1034
20-007-048	1/8" NPT	48" (4 Ft.)	15K/1034
20-008-012	1/4" NPT	12"	15K/1034
20-008-018	1/4" NPT	18"	15K/1034

Part #	Stinger Thread	Length, In.	PSI/Bar
20-008-024	1/4" NPT	24"	15K/1034
20-008-036	1/4" NPT	36" (3 Ft.)	15K/1034
20-008-048	1/4" NPT	48" (4 Ft.)	15K/1034
20-012-012	3/8" NPT	12"	15K/1034
20-012-018	3/8" NPT	18"	15K/1034
20-012-024	3/8" NPT	24"	15K/1034
20-012-036	3/8" NPT	36" (3 Ft.)	15K/1034
20-012-048	3/8" NPT	48" (4 Ft.)	15K/1034
20-013-012	1/2" NPT	12"	15K/1034
20-013-018	1/2" NPT	18"	15K/1034
20-013-024	1/2" NPT	24"	15K/1034
20-013-036	1/2" NPT	36" (3 Ft.)	15K/1034

Part #	Stinger Thread	Length, In.	PSI/Bar
20-013-048	1/2" NPT	48" (4 Ft.)	15K/1034
20-014-012	3/4" NPT	12"	10K/689
20-014-018	3/4" NPT	18"	10K/689
20-014-024	3/4" NPT	24"	10K/689
20-014-036	3/4" NPT	36" (3 Ft.)	10K/689
20-014-048	3/4" NPT	48" (4 Ft.)	10K/689
20-015-012	1" NPT	12"	10K/689
20-015-018	1" NPT	18"	10K/689
20-015-024	1" NPT	24"	10K/689
20-015-036	1" NPT	36" (3 Ft.)	10K/689
20-015-048	1" NPT	48" (4 Ft.)	10K/689

STAINLESS STEEL AND CARBON STEEL RIGID LANCE, STINGERS & PIPE NIPPLES

Part #	Description	PSI/Bar
20-107-010	NIPPLE, 1/8" -28 BSPP X 10" SS	15K/1,034 BAR
20-107-020	NIPPLE, 1/8" -28 BSPP X 20" SS	15K/1,034 BAR
20-107-048	NIPPLE, 1/8" -28 BSPP X 48" SS	15K/1,034 BAR
20-108-010	NIPPLE, 1/4" -19 BSPP X 10" SS	15K/1,034 BAR
20-108-020	NIPPLE, 1/4" -19 BSPP X 20" SS	15K/1,034 BAR
20-108-040	NIPPLE, 1/4" -19 BSPP X 40" SS	15K/1,034 BAR
20-108-048	NIPPLE, 1/4" -19 BSPP X 48" SS	15K/1,034 BAR
20-113-024	NIPPLE, 1/2" BSP X 24" SS	15K/1,034 BAR
20-113-036	NIPPLE, 1/2" BSP X 36" SS	15K/1,034 BAR
20-113-048	NIPPLE, 1/2" BSP X 48" SS	15K/1,034 BAR
20-113-060	NIPPLE, 1/2" BSP X 60" (5') SS 15K	15K/1,034 BAR
20-117-010	NIPPLE, 1/8" -28 BSPP X 5/16"-24 UNF(F) X 10" SS	15K/1,034 BAR
20-118-010	NIPPLE, 1/8" -28 BSPP X 1/8" NPTM X 10" SS	15K/1,034 BAR
20-119-012	NIPPLE, 3/8" MPLH X 5/16"-24 UNF(F) X 12" SS	15K/1,034 BAR
20-212-048	NIPPLE, 3/8" -19 BSPP X 48" SS W/FLATS	15K/1,034 BAR
20-213-048	NIPPLE, 1/2" BSP X 1/2" NPT X 48" SS	15K/1,034 BAR



15K Rigid Lances Advanced Pressure Systems proudly offers a growing line of quality 304 SS 1/8 hard rigid lances for every pressure and application. Female machine screw threads are available on all NPT sizes. When ordering, please specify length and thread size. Up to 40-foot lengths available.



EXAMPLE:
50-000-025
is 1/16" rigid lance
x 25' overall
length.

Part #	Connection	I.D. & O.D.	PSI/Bar
50-000-XXX	1/16" NPT	.312 OD x .182 ID	15K/1034
50-001-XXX	1/8" NPT	.406 OD x .220 ID	15K/1034
50-002-XXX	1/4" NPT	.540 OD x .302 ID	15K/1034
50-004-XXX	3/8" NPT	.675 OD x .390 ID	15K/1034
50-006-XXX	1/2" NPT	.840 OD x .490 ID	15K/1034

10-15K Seamless 4130 Carbon Steel Rigid Lances Advanced Pressure Systems proudly offers a growing line of quality 4130 carbon steel aircraft quality seamless rigid lances for every pressure and application. Female machine screw threads are available on all NPT sizes. When ordering, please specify length and thread size. Up to 45-foot lengths available.

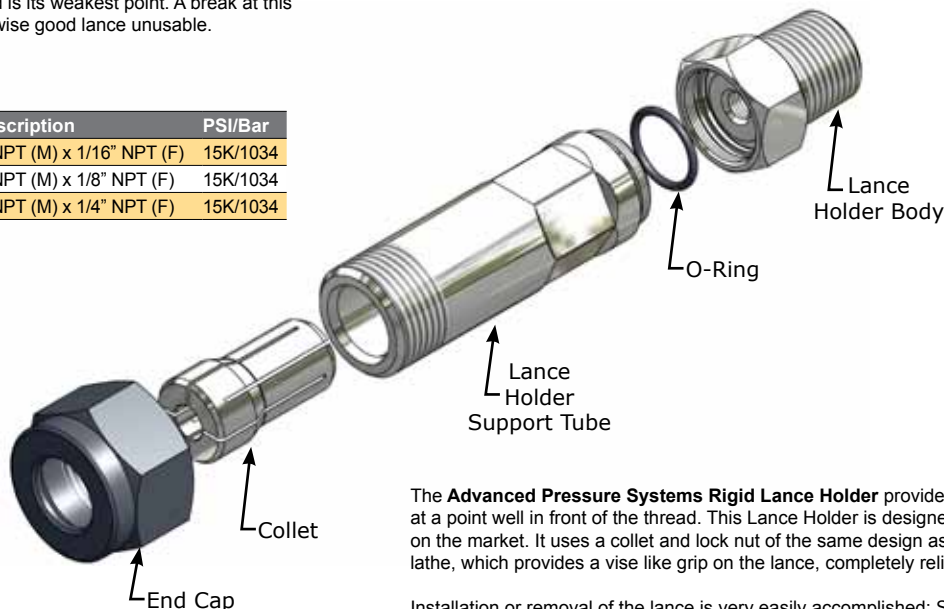


EXAMPLE:
45-000-025
is 1/16" rigid lance
x 25' overall length.

Part #	Connection	I.D. & O.D.	PSI/Bar
45-000-XXX	1/16" NPT	.312 OD x .182 ID	15K/1034
45-001-XXX	1/8" NPT	.405 OD x .215 ID	15K/1034
45-002-XXX	1/4" NPT	.540 OD x .302 ID	15K/1034

15K Rigid Lance Holder The threaded end of a rigid lance where it connects directly to a manifold is its weakest point. A break at this threaded connection renders an otherwise good lance unusable.

Part #	15K Lance Holders Description	PSI/Bar
20-002-001	Lance Holder Assy. 1/2" NPT (M) x 1/16" NPT (F)	15K/1034
20-002-002	Lance Holder Assy. 1/2" NPT (M) x 1/8" NPT (F)	15K/1034
20-002-003	Lance Holder Assy. 1/2" NPT (M) x 1/4" NPT (F)	15K/1034



The **Advanced Pressure Systems Rigid Lance Holder** provides full support to the lance at a point well in front of the thread. This Lance Holder is designed to be the best available on the market. It uses a collet and lock nut of the same design as used for a machine shop lathe, which provides a vise like grip on the lance, completely relieving stress on the thread.

Installation or removal of the lance is very easily accomplished: Simply slide the End Cap, Collet and Lance Holder Support Tube onto the lance in that order and then screw the lance into the Lance Holder body. The Lance Holder Tube is then screwed into the Body and then the Collet is secured into the Lance Holder Tube by the End Cap. The lance will then be fully supported.



15K Dual Lance Manifolds Advanced Pressure Systems offers a compact dual lance manifold so that you may run two rigid lances from a single control valve correctly. When ordering, please specify inlet and outlet sizes.

Part #	Connection	PSI/Bar
20-025-001	1/2" NPT (F) with 2 - 1/16" NPT (F) Outlets	15K/1034
20-025-002	1/2" NPT (F) with 2 - 1/8" NPT (F) Outlets	15K/1034
20-025-003	1/2" NPT (F) with 2 - 1/4" NPT (F) Outlets	15K/1034
20-025-004	1/2" NPT (F) with 2 - 1/2" NPT (F) Outlets	15K/1034



**Operate Two Lances
at the Same Time!**

Articulated Flex Lance Safety Stop For Tube Sheet Mounting

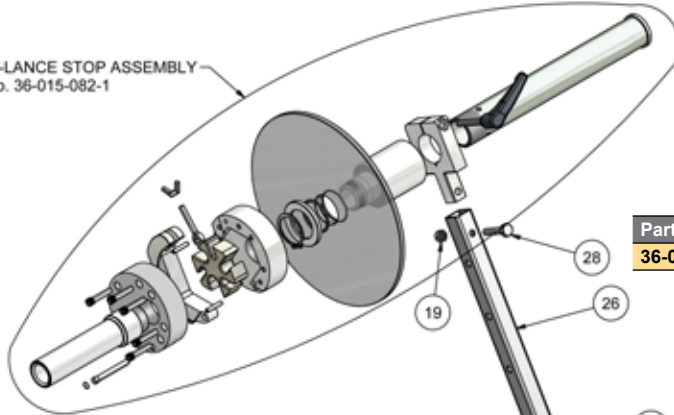
This takes the Hand Held "Flex Lance Safety Grip" to the next level. This versatile lance stop/ anti-withdrawal device attaches easily to the tube sheet for safer pipe cleaning operations. It features ready adaptability to vertical or horizontal applications and its wide range of expansion accommodates any size of tube sheet. Construction is galvanized steel with aluminum handles and includes a Lexan™ splash guard.

The stops for six sizes of lances are provided by a quick-change insert, which is built into the design. This eliminates the problem of lost lance stops and makes changing to a different lance diameter quick and easy.

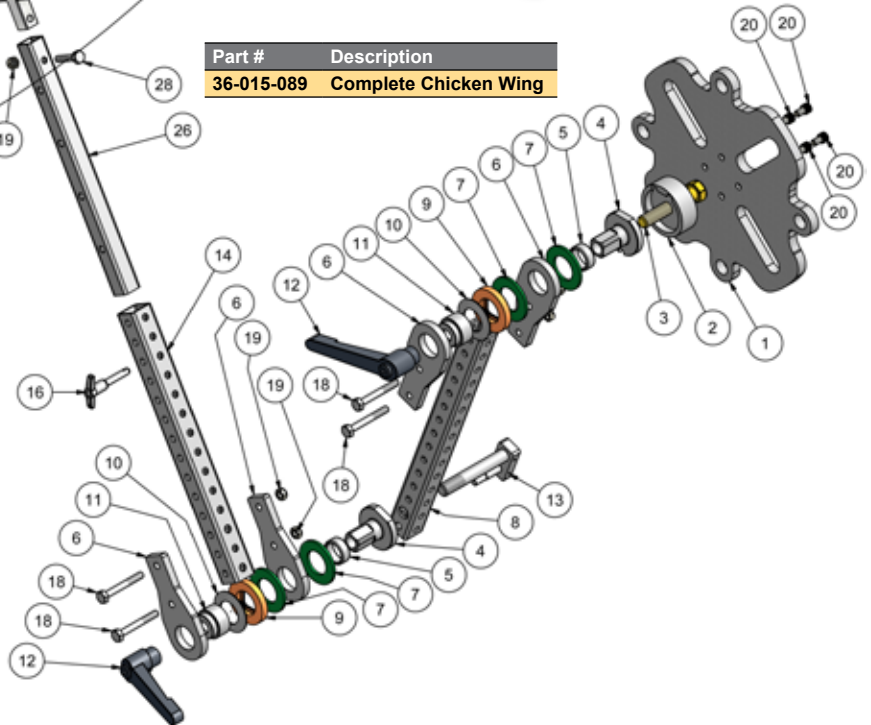
Change of Lance Stop Size:

1. Unscrew **Cover**.
2. Open **Lance Stop Retainer Latch**.
3. Pull out **Lance Stop Insert**
4. Feed lance into **Support Tube**.
5. Select **Stop size** and install **Insert**.
6. Close **Latch** and replace **Cover**.

MULTI-LANCE STOP ASSEMBLY
Part No. 36-015-082-1

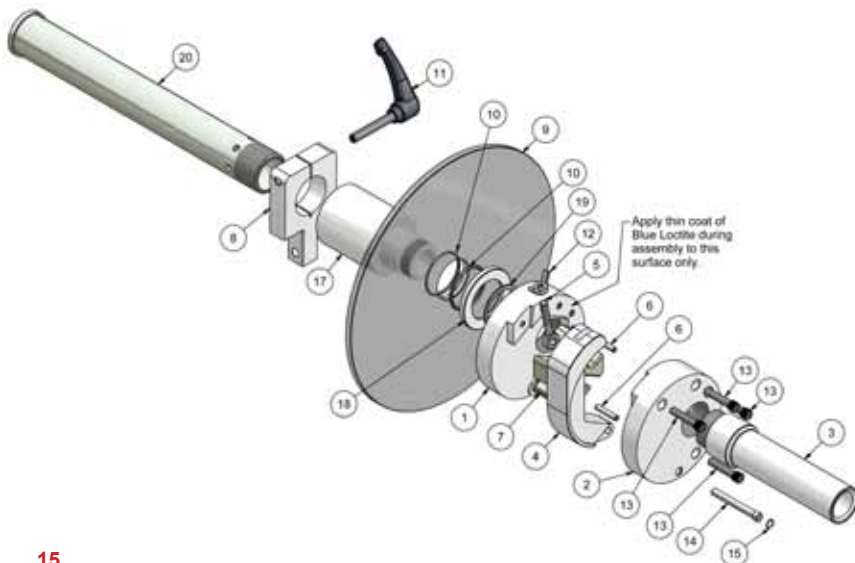


Part # Description
36-015-089 Complete Chicken Wing

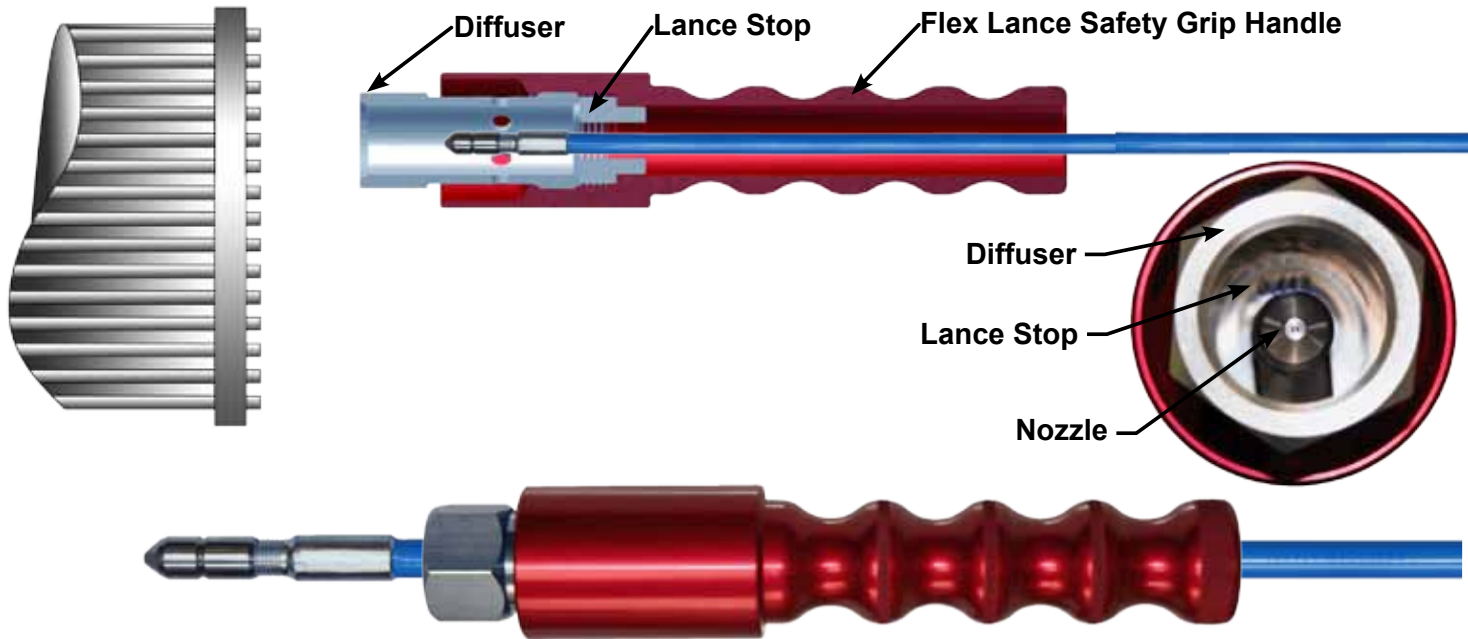


ITEM	QTY	PART #	DESCRIPTION
1	1	36-015-026	Chicken Wing Mounting Plate
2	1	36-015-025	Clutch Mounting Plate
3	1	10-121-350	Hex. Head Bolt 5/8"-11 x 3-1/2" long
4	2	36-015-046	Limiters - AWD Modified Torque
5	2	36-015-034	Bearing - Torque Limiter
6	4	36-015-016	Pivot Mounting Plate
7	4	36-015-033	Torque Limiter Fiber Washer
8	1	36-015-018	Telespar Arm
9	2	36-015-035	Torque Limiter Spacer (Orange)
10	2	36-015-032	Spring Washer
11	2	36-015-023	Spacer for Torque Limiter
12	2	36-015-028	Handle
13	1	36-015-068	Pivot Pin & Locking Plate Assembly
14	1	36-015-019	Telespar Arm
16	1	36-015-027	Extension Locking Pin
18	4	10-015-250	Hex. Head Bolt 5/16"-18 x 2-1/2" long
19	5	10-100-003	Nylon Lock Nut 5/16"-18 SS
20	4	10-002-050	SHCS 5/16"-18 x 1/2" long SS
26	1	36-015-088	New Telespar Extension Arm
27	1	36-015-082-1	Multi-Lance Stop Assembly
28	1	10-015-150	Hex. Head Bolt 5/16"-18 x 1-1/2" long

ITEM	QTY	PART #	DESCRIPTION
1	1	36-015-070	Lance Stop Body - Part 1
2	1	36-015-072	Lance Stop Body - Part 2
3	1	36-015-073	Lance Guide Tube
4	1	36-015-071	Latch - Lance Stop Holder
5	1	36-015-074	Latch Bolt
6	2	36-015-080	Dowel Pin
7	1	36-015-007	Lance Stop Insert
8	1	36-015-069	Clamp (new Style)
9	1	36-015-044	Splash Shield (1.5" Size)
10	2	30-001-127	O-Ring
11	1	36-015-031	Handle
12	1	36-015-075	Wing Nut
13	5	10-001-125	SHCS 1-1/4" long SS
14	1	36-015-077	Latch Pivot Pin
15	1	36-015-078	Retaining Clip
17	1	36-015-081	Extension Tube Holder
18	1	36-015-084	Splash Shield Retaining Ring
19	1	10-121-150	Retaining Clip (5100-150) SS
20	1	36-015-087	Extension Tube



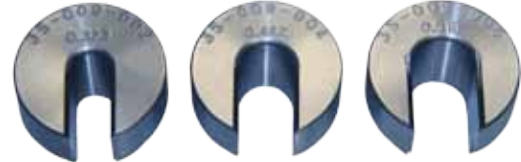
Flex Lance Safety Grip The **FLEX LANCE SAFETY GRIP** is designed to minimize the risk of injury to flex lance operators caused by a live nozzle exiting the tube unexpectedly. The comfortably contoured handle makes it easy to hold the **SAFETY GRIP** against the tube sheet, allowing retraction of an active nozzle into a stainless steel sleeve where the force of the jets is dissipated.



The **FLEX LANCE SAFETY GRIP** is simple to install and is quickly adapted to handle various lance sizes by selecting the appropriately sized **LANCE STOP**.

Part #	Flex Lance Safety Grip
35-009-000	COMPLETE ASSEMBLY: Small Flex Lance Safety Grip*
35-009-001	HANDLE: Small Flex Lance Safety Grip
35-009-007	DIFFUSER: Small Flex Lance Safety Grip

Installation of LANCE STOPS: Simply unscrew the **DIFFUSER** from the **SAFETY GRIP HANDLE**, which will allow the **LANCE STOP** to be removed. Insert the new lance into the back of the **SAFETY GRIP HANDLE**. Select the correct size **LANCE STOP** for the lance to be used and place it onto the lance behind the nozzle end fitting. Insert the nozzle through the **DIFFUSER** and tighten the assembly into the **HANDLE**. (*Note: the larger diameter end of the Lance Stop must be next to the end fitting.*)



Part #	Lance Stop Description
35-009-002	Stop .323 Flex Lance Safety Guard Lance
35-009-003	Stop .390 Flex Lance Safety Guard Lance
35-009-004	Stop .442 Flex Lance Safety Guard Lance (2005 Lance)
35-009-005	Stop .510 Flex Lance Safety Guard Lance (2006 Lance)
35-009-006	Stop .725 Flex Lance Safety Guard Lance (2108 Lance)
35-009-010	Stop .290 Flex Lance Safety Guard Lance (3/2 & 3004 Lance)
35-009-011	Stop .530 Flex Lance Safety Guard Lance (6005 Lance)
35-009-012	Stop .570 Flex Lance Safety Guard Lance (1/4" NPT & 9/16" Rigid Lance Size)
35-009-013	Stop .470 Flex Lance Safety Guard Lance (4005 Lance)
35-009-014	Stop .870 Flex Lance Safety Guard Lance



Hose Whip Checks APS strongly recommends the use of "whip check" hose restrainers in any water jetting operation. These are perhaps the simplest and least expensive safety measure to implement. A "whip check" can be attached at any point where two hoses are joined, or to a pump's fluid end at the discharge side, or where a hose attaches to any piece of water jetting equipment such as a waterjet lancing or cutting system.

When a high pressure hose is joined to a piece of equipment, the **whip check should be used to restrain the movement of the pressurized hose** should it become uncoupled, thereby allowing operators to get away and perform a safe, orderly system shut-down.

Part #	Description
43-010-001	Stainless Whip Check
43-010-002	Nylon Whip Check

Pictured here are two typical whip check types, one is the stainless steel tension model, and the other is high-strength brightly-colored nylon with rubber cinch bands.

