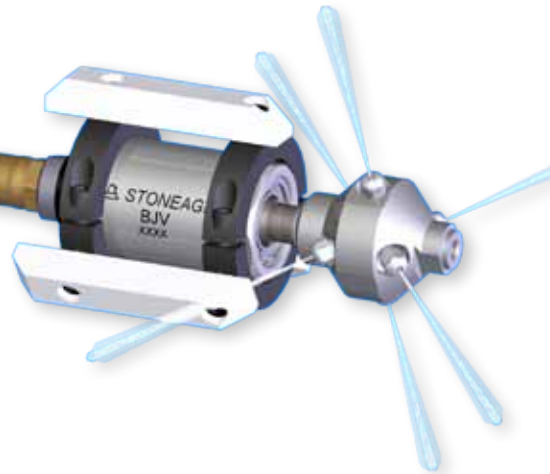


Pipe Cleaning Centralizers

Centering Devices for all BJVs™



BJ 070 Skid

This is a versatile system with interchangeable plastic skids that bolt on to collars and change out easily. The skid works well through elbows and can handle up to 12" diameter pipes effectively. This skid accepts all **BJV™** nozzles and is shown in the upper right photo. Ask about additional skid sizes when ordering.



BJ 070 Plastic Skid Style

Available in 6", 8", 10" & 12" Interchangeable Skid Sizes
(152 mm, 203 mm, 254 mm, & 305 mm)

BJ 286 6-Wheel Adjustable

This centralizer is designed for straight run pipes only. It has an adjustable scissor style aluminum frame with tough plastic wheels and is easily converted among the 15k, 20k and 40k psi **BJV™** nozzle line.



MODEL	RANGE OF ADJUSTMENT	WEIGHT
BJ 286-S	9-18 in. 230-460 mm	20 lbs 9 kg
BJ 286-M	13-40 in. 330-1010 mm	32 lbs 15 kg
BJ 286-L	16-60 in. 410-1520 mm	40 lbs 18 kg

BJ 288 8-Wheel Adjustable

This centralizer is designed to travel through elbows easily. It has adjustable telescopic steel legs with tough plastic wheels and is easily converted among the 15k, 20k and 40k psi **BJV™** nozzles.



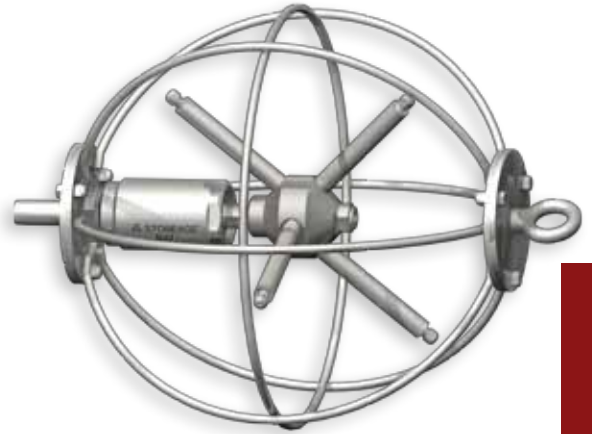
MODEL	RANGE	WEIGHT
BJ 288-S	16 - 21 in. 410 - 530 mm	12 lbs 5 kg
BJ 288-M	22 - 29 in. 560 - 740 mm	13 lbs 6 kg
BJ 288-L	30 - 37 in. 770 - 940 mm	16 lbs 7 kg

Safety Accessories

BJ Ball Style Centralizers

This style is the best for negotiating complex piping arrangements. They also handle built-up debris without stopping jet rotation. They are constructed out of stainless steel, have a length of 24.4 inches and a diameter of 19.5 inches (495 mm). The maximum nipple extension for these two cage centralizers is 6 inches.

MODEL	Pressure - Max.	Length	Diameter	Max. Nipple Extension
BJ 100-SS	15k psi	24.4 in. (619 mm)	19.5 in. (495 mm)	6 in.
BJ 100-20k	20k & 40k psi	24.4 in. (619 mm)	19.5 in. (495 mm)	6 in.



PIPE CLEANING



Anti-Withdrawal Device

The **VE 70000** meets the safety requirements for tube and pipe cleaning operations. It offers tremendous versatility and a very durable design. It adapts easily to either vertical or horizontal applications, offers a wide range of expansion to accommodate different tube sheet sizes and is made of stainless steel with aluminum handles and a Lexan plate.

MODEL	VE-70000
Assembled Weight	22 lbs. 10 kg
Applicable Hose Sizes	4, 5, 6, 8, 13 mm



Line Mole Backout Preventers

These devices are designed specifically to increase operator safety. They help prevent the nozzle from backing out of the pipe. Several options are available including jigs for small diameter pipes, for pipes with various flange bolt circle diameters, and adaptors for pipes with no flange entry.



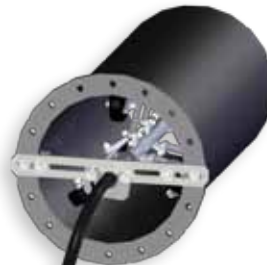
BJ 305 for 2" - 6" Pipes

User is responsible for securing to pipe. Handles hose O.D.'s from 3/8" to 9/16".



BJ 310 for 4" - 8" Pipes

Includes clamp for securing to pipe. Handles tool O.D.'s of 1-1/2" diameters or larger.



BJ 320 for 5" - 17" Pipes

Handles hose O.D.'s from 9/16" to 1-7/16".



BJ 325 Extensions for 15' - 36" Pipes

BJ 340 No-Flange Kit

Handles hose O.D.'s from 9/16" to 1-7/16".



www.advancedpressuresystems.com
Toll Free in North America:
1 (877) 290-4277 or (281) 290-9950

