

Small Tube Cleaners & Polishers

A Powerful Family of Tools for Small Tubes

Our Smallest Rotary Tube Cleaners

Banshees® are available in 5 sizes, and handle pressures from 10k-40k psi. We offer 3 different head options, including an **Unplugging** style head, which is designed for plugged tubes. A second option is the **Polisher** style head, designed to tackle thin hard scale, and a third option is the **Universal** head design, for all applications. (see opposite page for all 3 head options.)

The **Banshee**® represents our latest engineering achievement for cleaning small tubes. These tools provide the highest quality jets with no replacement parts. Customer feedback on these new tools has been outstanding worldwide.



A **Banshee**® **BN24**™



Banshee® enters tube bundle with **VE 7000**.

BN9.5™



The **BN9.5**™ is for tubes with a 1/2" - 5/8" I.D.

NEW

BN13™



The **BN13**™ is for tubes from 5/8" - 1" I.D.

BN18™



The **BN18**™ is for tubes from 7/8" - 1.25" I.D.

BN18-40k™



The **BN18-40k**™ is for tubes from 7/8" - 1.25" I.D. and has 40k psi power. This model is detailed on page 28.

BN24™



The **BN24**™ is for tubes from 1.1" - 2" I.D.

BN33™



The **BN33**™ is for tubes from 1.5" - 2."

NOTE: Tools shown here are not exact size.

US Patent 7,635,096

Tool Talk™

Think Safety!

When using flex lances and tube cleaning tools remember to include safety devices like the **VE 7000** shown above and on page 19.

TUBE CLEANING

NEW

Banshee® Specifications

Model	BN9.5 ™		BN13 ™		BN18 ™ *		BN24 ™		BN33 ™	
For Tubes I.D.	1/2" - 5/8"	12.7-16 mm	5/8"-1"	16-25 mm	7/8"-1.25"	22-38 mm	1.1"-2.0"	29-51 mm	1-1/2"-2.0"	38-50 mm
Max. Pressure	22k psi	1500 bar	22k psi	1500 bar	22k psi	1500 bar	22k psi	1500 bar	22k psi	1500 bar
Flow Rating	0.2 Cv		0.27 Cv		0.66 Cv		0.9 Cv		2.3 Cv	
Inlet Port	M7, 1/16 npt, L4		1/8 npt, 1/4 LH, RH, 3/8" LH, RH or BSPP		1/4 npt, 9/16"-18 LH, RH, or BSPP		3/8 npt, 9/16"-18 LH, RH or BSPP		1/2 npt, 9/16" MP or BSPP	
Body Diameter	0.374 in.	9.5 mm	0.5 in.	12.7 mm	0.69 in.	17.6 mm	0.93 in.	24 mm	1.3 in.	33 mm
Length w/ Head	2.57 in.	65.27 mm	2.9 in.	73.7 mm	3.8 in.	96.5 mm	5.12 in.	130 mm	6.9 in.	175 mm

* Specs for the **BN18-40k-L6**™ are located on page 28.

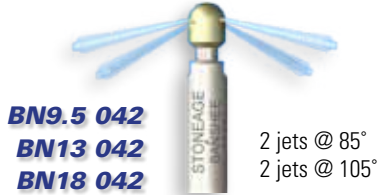


www.advancedpressuresystems.com
Toll Free in North America:
1 (877) 290-4277 or (281) 290-9950



22k psi with 3 Head Options

Up to 20k psi for tubes as small as 1/2" I.D.



Polisher Heads

Designed to remove thin hard scale. Ideal for IRIS inspections.

Unplugging Heads

This jetting option is designed to clean the toughest plugged tubes.

Universal Heads

Designed to unplug and polish at the same time.

NEW

BN9.5™ Head Options

Style	Part Number	Flow @ 10k	Flow @ 15k	Flow @ 22k
Polisher	BN9.5 042-A	4.5 gpm 17 lpm	5.5 gpm 21 lpm	Use BN-042-B
	BN9.5 042-B	Use BN-042-A	5 gpm 19 lpm	5.5 gpm 21 lpm
Unplugging	BN9.5 043-A	5 gpm 19 lpm	6 gpm 23 lpm	Use BN-043-B
	BN9.5 043-B	Use BN-043-A	5.5 gpm 21 lpm	6.5 gpm 25 lpm

BN13™ and BN18™ Head Options

Pressure	Style	Part Number	Flow Range	
10k-15k psi 700-1k bar	Polisher	BN13 042-A	7 gpm - 9 gpm	26 lpm - 34 lpm
	Unplugging	BN13 043-A	7 gpm - 9 gpm	26 lpm - 34 lpm
	Universal	BN13 044-A	8 gpm - 10 gpm	30 lpm - 38 lpm
15k-22k psi 1k-1500 bar	Polisher	BN13 042-C	7 gpm - 9 gpm	26 lpm - 34 lpm
	Unplugging	BN13 043-C	7 gpm - 9 gpm	26 lpm - 34 lpm
	Universal	BN13 044-C	8 gpm - 10 gpm	30 lpm - 38 lpm
10k-15k psi 700-1k bar	Polisher	BN18 042-A	11 gpm - 14 gpm	41 lpm - 53 lpm
	Polisher	BN18 042-B	8 gpm - 10 gpm	30 lpm - 38 lpm
	Unplugging	BN18 043-A	11 gpm - 14 gpm	41 lpm - 53 lpm
	Unplugging	BN18 043-B	8 gpm - 10 gpm	30 lpm - 38 lpm
15k-22k psi 1k-1500 bar	Universal	BN18 044-A	11 gpm - 14 gpm	41 lpm - 53 lpm
	Universal	BN18 044-B	8 gpm - 10 gpm	30 lpm - 38 lpm
	Polisher	BN18 042-C	11 gpm - 14 gpm	41 lpm - 53 lpm
	Polisher	BN18 042-D	8 gpm - 10 gpm	30 lpm - 38 lpm
	Unplugging	BN18 042-C	11 gpm - 14 gpm	41 lpm - 53 lpm
	Unplugging	BN18 042-D	8 gpm - 10 gpm	30 lpm - 38 lpm
	Universal	BN18 042-C	11 gpm - 14 gpm	41 lpm - 53 lpm

Banshees are available with a variety of inlet options, including right hand pipe thread connections, LH and RH Medium Pressure threads, and BSPP, as noted in the chart on page 26.

BN24™ Universal Head Options

Pressure	Part Number	Flow Range
10k-15k psi 700-1k bar	BN24 044-A	19-24 gpm 70-90 lpm
	BN24 044-B	14-18 gpm 50-70 lpm
	BN24 044-C	11-13 gpm 40-50 lpm
15k-22k psi 1k-1500 bar	BN24 044-D	17-20 gpm 60-75 lpm
	BN24 044-E	14-16 gpm 50-60 lpm
	BN24 044-F	11-13 gpm 40-50 lpm

BN33™ Universal Head Options

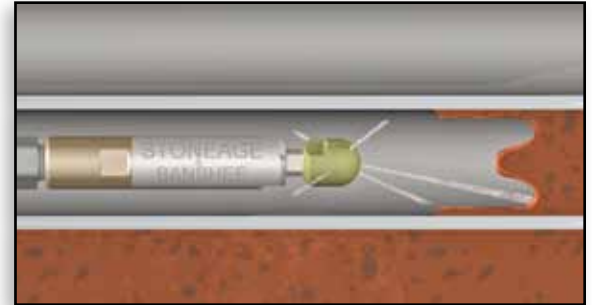
Pressure	Part Number	Flow Range
10k-15k psi 700-1k bar	BN33 044-A	39-48 gpm 147-181 lpm
	BN33 044-B	32-38 gpm 121-144 lpm
	BN33 044-C	25-31 gpm 95-117 lpm
	BN33 044-D	19-24 gpm 72-90 lpm
	BN33 044-E	14-18 gpm 53-68 lpm
15k-22k psi 1k-1500 bar	BN33 044-F	21-25 gpm 79-94 lpm
	BN33 044-G	17-20 gpm 64-76 lpm
	BN33 044-H	14-16 gpm 53-60 lpm
	BN33 044-I	11-13 gpm 41-49 lpm

TUBE CLEANING

40k psi Banshees® - New for 2010!

Now with 40k psi Power!

The **Banshee® BN18-40k-L6™** offers greater cleaning ability due to its 40k psi rating. We offer both Polishing and Unplugging head options for all your tube cleaning applications. (see examples and chart below.) These heads come with replaceable **OS2** sapphire nozzle inserts.



The **BN18-40k-L6™** removes the toughest polymers and plastics.



Tool shown to exact size.

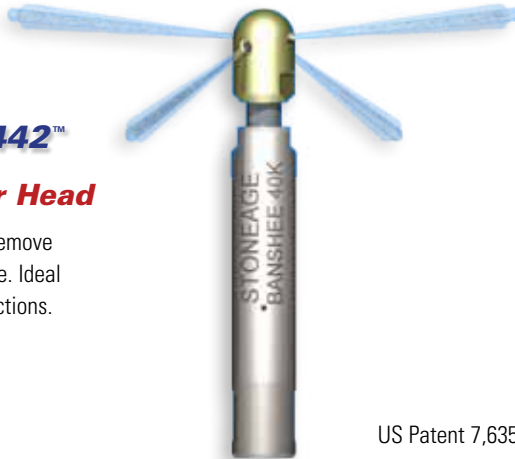
TUBE CLEANING

BN18 442™

Polisher Head

Designed to remove thin hard scale. Ideal for IRIS inspections.

- 2 jets @ 85°
- 2 jets @ 105°

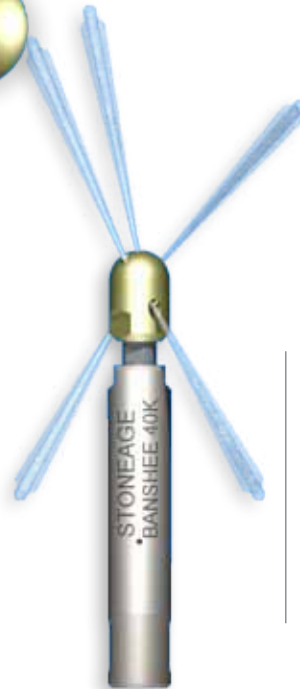


BN18 443™

Unplugging Head

This jetting option is designed for the toughest plugged tubes.

- 1 jet @ 15°, 30°, 50°
- 2 jets @ 140°



US Patent 7,635,096

Up to 40k psi for tubes from 7/8" - 1 1/4"

BN18-40k-L6™		
Model	BN18™	
For Tubes I.D.	7/8"-1-1/4"	22-38 mm
Max. Pressure	40k psi	2800 bar
Flow Rating	0.25 Cv	
Inlet Port	3/8 - 24 LH HP	
Body Diameter	0.69 in.	17.6 mm
Length Overall	4.7 in.	119 mm

BN18-40k-L6™ Head Options

Style	Part Number	Flow Range
Polisher	BN18™ 442-A	6.5-7 gpm 24-26 lpm
	BN18™ 442-B	6-6.5 gpm 23-24 lpm
	BN18™ 442-C	5-5.5 gpm 18-21 lpm
	BN18™ 442-D	4-4.5 gpm 15-17 lpm
Unplugging	BN18™ 443-A	6.5-7 gpm 24-26 lpm
	BN18™ 443-B	6-6.5 gpm 23-24 lpm
	BN18™ 443-C	5-5.5 gpm 18-21 lpm
	BN18™ 443-D	4-4.5 gpm 15-17 lpm



www.advancedpressuresystems.com
Toll Free in North America:
1 (877) 290-4277 or (281) 290-9950

