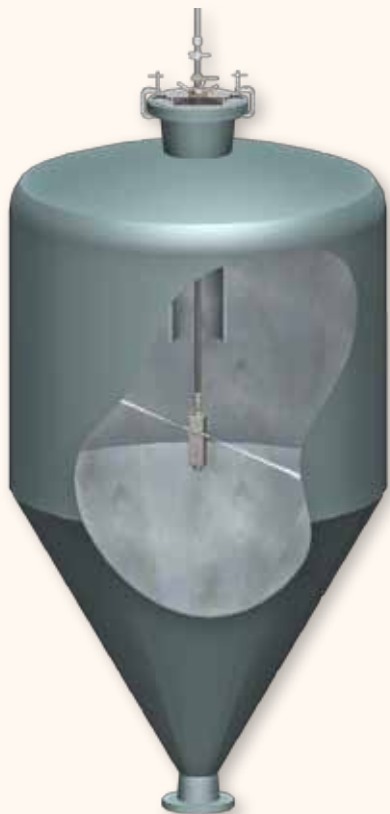


Mechanized No-Entry Systems

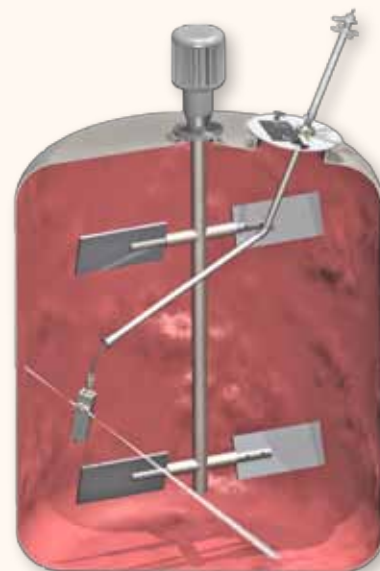
Tool Talk™ - Efficiency PLUS Safety - The StoneAge® Way



Large Tanks and Vessels

Large tanks and vessels can be among the most difficult cleaning challenges due to their size, limited access and internal geometries. **StoneAge®** offers several tools that provide powerful cleaning and keep the operator out of the tank. The simplest equipment to use is a 3-D tool, although the most efficient means is a 2-D tool moved along the axis of the vessel. Unfortunately, this is not possible in most tanks due to central obstructions such as agitators. Standoff distances can also be quite large, so nipple extensions can be very useful. Rotation speed and surface speed are important considerations due to the large size of the vessels being cleaned as well.

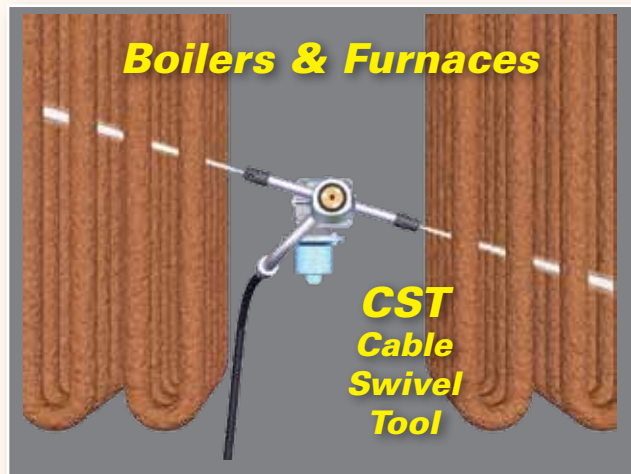
The simplest method for using a 3-D tool is to hang it by the high pressure hose as shown on pg 38. Several types of positioners for 3-D tools allow you to place the tool closer to the surface to be cleaned and to position the tool on the far side of obstructions, shown on page 41.



Limited Access

Large diameter tanks, stacks and vessels that have an accessible center can most effectively be cleaned using a 2-D rotating tool that is slowly raised or lowered to achieve complete coverage.

Boilers & Furnaces



**CST
Cable
Swivel
Tool**

Extra Large Vessels



**SM-Air
with
Extension
Arms**