

The Torus® - 3-D Tank Cleaning

The New 3-D Torus®

One Simple Tool for All Your Tank Cleaning Needs

Simplicity Efficiency Productivity

The **Torus®** is designed for multiple cleaning challenges. It operates under pressures from 2k - 22k psi by simply changing the manifold and inlet coupling. Plus, there are four different inlet couplings, and the three interchangeable manifolds are adjustable to handle flows from 17 - 80 gpm.

Comes with 2" and 8" Arms.
Longer extensions are available.
See pages 40 and 51.

Torus® Specs

Pressure	2k - 22k psi	138-1500 bar
Flow Capacity	17-80 gpm	64-303 lpm
Flow Rating	2.11 Cv	
Power	50-950 hp	37-708 kW
Cycle Time	4-24 minutes	
Inlet Options	3/4" or 1" npt or 3/4" or 1" MP	
Diameter	5.62 in.	143 mm
Weight	35 lbs	15.9 kg

NEW



- **2k-22k psi**
- **Simple to maintain**
- **Change manifold and coupling to meet different pressure and flow ratings**
- **Magnetic Speed Control**



Magnetic Speed Control

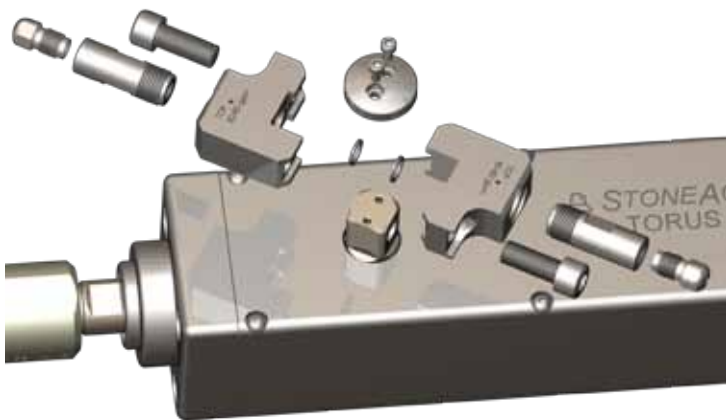
The **Torus®** offers long lasting and durable magnetic speed control. Operators can easily adjust the magnetic rotation speed to adapt to different applications. The dial adjusts easily to decrease the speed for difficult applications and increase the speed for the easier applications. If the arms hit an obstruction the tool simply stops rotating and there are no broken gears to repair or replace.

Up to 22k psi Power & 80 gpm

Here's how it works

The most impressive feature of the **Torus**® is the simplicity of the design. This tool does not need to be sent to the factory to be repaired. It has very few parts and can be assembled with common hand tools. Easy maintenance means reduced downtime.

There are two primary components inside the **Torus**®, the speed control and the angle block assembly. The magnetic speed control can be replaced easily as a complete unit. The angle block can be removed to replace the High Pressure Seal assemblies.



Customer Specifies which Manifold(s)



Manifolds change out quickly in the field.

Interchangeable Manifolds

The three manifolds bolt on and off which allows for quick and easy adaptation to different working pressures and applications. Refer to the chart below to determine the correct manifold and nozzle size.

VESSELS & TANKS

Torus® Jetting Chart

NOZZLE SIZE

		Nozzle Diameter	0.047	0.052	0.057	0.063	0.069	0.075	0.082	0.090	0.098	0.106	0.115	0.125	0.135	0.145	0.155	0.165	
		Nozzle Number	4	5	5.5	6.5	8	10	12	14	16	19	23	27	31	36	41	46	
PRESSURE, PSI	2,000	FLOW, GPM	<i>Torus</i> ® at 2k psi must use fast rotation										26	30	34	39	43	47	51
		MANIFOLD										LF	LF	LF	LF	LF	LF	LF	
	5,000	FLOW, GPM					18	22	26	30	35	41	47	54	61	68	75		
		MANIFOLD					LF	LF	LF	LF	MF	MF	MF	MF	HF	HF	HF		
	10,000	FLOW, GPM			17	22	26	30	36	42	50	57	66	76					
		MANIFOLD			LF	LF	LF	LF	MF	MF	MF	MF	HF	HF					
15,000	FLOW, GPM		18	21	27	31	37	44	52	61	70	81							
	MANIFOLD		LF	LF	LF	MF	MF	MF	HF	HF	HF	HF							
22,000	FLOW, GPM	17	20	24	30	36	42	51	60	70	81								
	MANIFOLD	LF	LF	LF	MF	MF	MF	HF	HF	HF	HF								



www.advancedpressuresystems.com
 Toll Free in North America:
 1 (877) 290-4277 or (281) 290-9950

